

Arkansas
**ARKANSAS RURAL
COMMUNITY
HEALTH COHORT
(ARCH)**

**UNIVERSITY OF ARKANSAS FOR
MEDICAL SCIENCES, DR. PING-CHING
HSU**

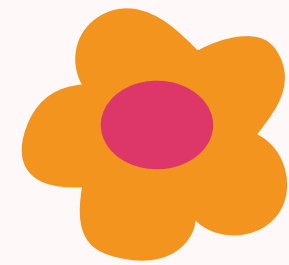


HISTORY



- **SPIT FOR THE CURE FIRST STARTED IN 2007 UNDER THE DIRECTION OF DR. SUSAN KADLUBAR, PH.D., WITH COLLABORATIONS SPANNING IN THE UAMS COLLEGE OF MEDICINE, DEPARTMENT OF MEDICAL GENETICS, AND THE W.P. ROCKEFELLER CENTER.**
- **INITIALLY AN IDEA BY DR. KADLUBAR AND COLLEAGUE DR. SUZANNE KLIMBERG, M.D., SPIT FOR THE CURE STARTED UP IN 2007 WITH THE UNIQUE IDEA OF ALLOWING WOMEN TO COLLABORATE TOGETHER ON FINDING A CURE TO BREAST CANCER.**
- **IN 2007, INVESTIGATORS LAUNCHED RECRUITING EFFORTS WITH EVENTS ASSOCIATED WITH THE ARKANSAS SUSAN G. KOMEN RACE FOR THE CURE[®].**
- **WOMEN FROM ALL OVER THE STATE OF ARKANSAS TOOK THIS UNIQUE OPPORTUNITY TO BE INVOLVED AND BECAME PIONEERS IN BREAST CANCER RESEARCH, RESULTING IN THE ESTABLISHMENT OF A 26,000-MEMBER POPULATION-BASED COHORT OF WOMEN.**





LOOK HOW FAR WE HAVE COME, *Together*



- **INTRODUCED FORMALLY AS SPIT FOR THE CURE COHORT IN 2007, THE ARKANSAS RURAL COMMUNITY HEALTH STUDY HAS SUCCESSFULLY AIDED IN RESEARCH EFFORTS REGARDING RURAL POPULATION HEALTH AND THEIR RESPECTIVE CHALLENGES THESE COMMUNITIES FACE TO MAINTAIN GOOD HEALTH.**
- **THE COHORT CONSISTS OF APPROXIMATELY 26,000 ARKANSAN WOMEN AGED 18 THROUGH 95 FROM ALL 75 COUNTIES IN THE STATE, INCLUDING OTHER STATES.**
- **THE ARKANSAS RURAL COMMUNITY HEALTH COHORT HEALTH STUDY IS CURRENTLY UNDER THE DIRECTION OF DR. PING-CHING HSU, PH.D. AND ASSOCIATES. ARCH RESEARCH WILL CONTINUE TO BE CONDUCTED AT THE UAMS FAY W. BOOZMAN COLLEGE OF PUBLIC HEALTH AND THE UAMS WINTHROP P. ROCKEFELLER CANCER INSTITUTE.**

MEET OUR *Current* TEAM:



**DR. PING-CHING HSU,
PH.D., PRIMARY
INVESTIGATOR**



DR. ERYN MATICH, PH.D.



KATIE WALLIS, LATG



**DR. SHELBIE STAHR,
PH.D., MPH**

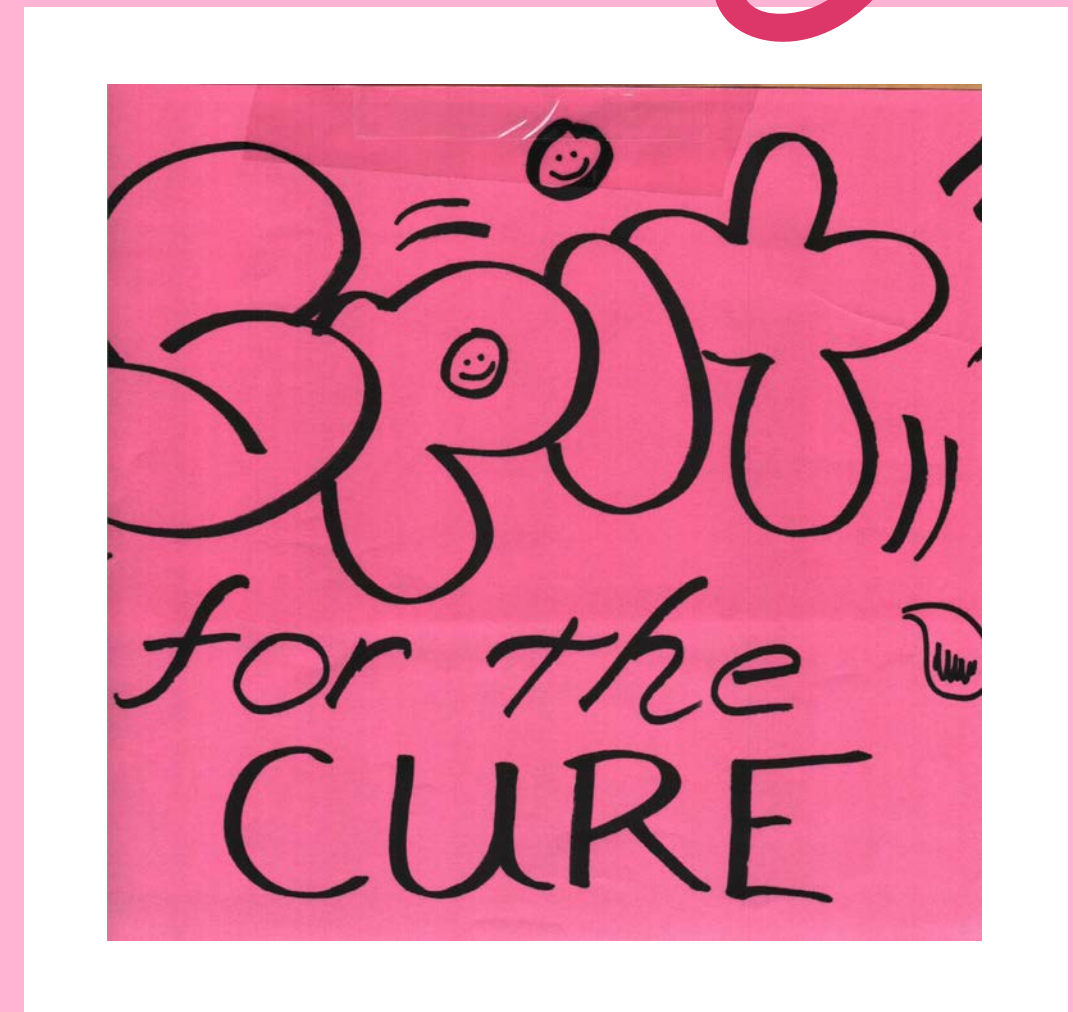


**GAIL RUNNELS, RN,
CCRP**

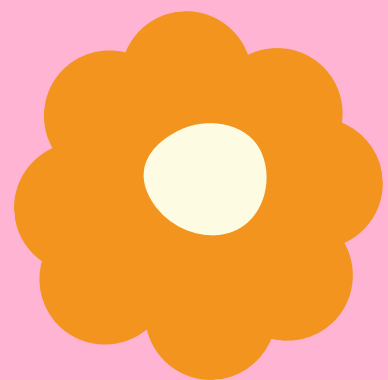


EDGAR ELLIS, MPH

LET'S TAKE IT
BACK TO THE
Beginning
BEGINNING...



**SPIT FOR THE CURE'S FIRST EVENT WAS THE
SUSAN G. KOMEN RACE FOR THE CURE IN 2007.
WHAT A GREAT TURNOUT IT WAS!**

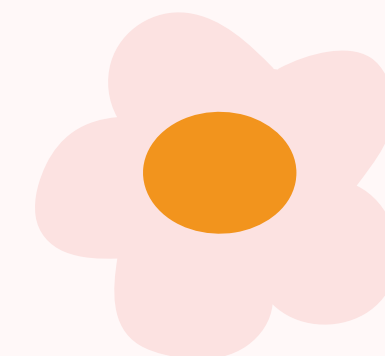




**SPIT FOR THE CURE'S
FIRST COMMUNITY
EVENT, SUSAN G.
KOMEN RACE FOR THE
CURE, 2007**

ARE YOU READY TO SPIT FOR THE CURE?





FIRST CAME ONE, THEN
THE *next* - THE 2008
SUSAN G. KOMEN RACE
FOR THE CURE HAD A
BEAUTIFUL TURNOUT FULL
OF *Beautiful* PEOPLE.





rack family past

it has draped is wooden years, the ears when he guilty. Or not is rather beat our books center post is id the coat eger than his e. The rack has ous offices in ears. se rack was tother, and ood in a cafe. Jenkins Cafe in Gurdon. Jim Abe the cafe and nd people hung ut rack from time in the as a bounced o Jim Abe in su which the ten had closed. Jim Abe from h in how he Worcester, ow he came to dges there. he left never heir unborn as five weeks im and last

Only two contested 18 Senate

Education, tax, pul committees to see

BY MICHAEL R. WICKLINE

Eighteen state Senate seats are up for grabs in the Nov. 4 general election, but only two have opposing candidates.

One of those races may figure in who becomes the Senate chairman of the budget committee, and term limits make sure there will be new chairmen of the Senate education, public health and taxation committees.

In one of the two contested races, Rep. David Johnson, D-Little Rock, said he doesn't believe most people know he has an opponent in his bid to succeed term-limited Sen. Jim Argue, D-Little Rock, in District 32.

Johnson's foe is a write-in candidate, Scott Pfeegor of Little Rock, a 46-year-old employee at Terry's Finer Foods in Little Rock.

In 2004, Pfeegor received 16 votes in his write-in candidacy against Argue, who received 30,778 votes, according to the

District 30 bulk of atte

White Baker contest

Breast cancer survivors line up Saturday for the Survivors Parade after the Susan G. Komen Race for the Cure. More photos are available at focus.arkansasonline.com.



ANOTHER
Successful
YEAR IN THE
BOOKS!





SPIT HAPPENS...

SPIT FOR THE CURE 2008'S TEAM DNA GENOTEK



ELLEN MACLEAN, KERRY CHATBURN, LISA VIDA, CHANTAL HEMENS-DAVIS, MELANIE BOUFFARD, STEVE BELLAND, RAFAL IWASIW, CATHY FORD





OVER THE YEARS, OUR COHORT *Grew*...

You are Invited

Press Conference and Rally to announce details for the

2009 Susan G. Komen Arkansas Race for the Cure®

Wednesday, August 12, 2009, at 10:30 a.m.

War Memorial Stadium (on the field)
Fair Park and Markham, Little Rock

Race Chair: Ellen Kreth
Honorary Chair: Jimmie Lou Fisher
Honorary 3 Miles of Men Chair: Anthony Lucas

it's MY RACE to win

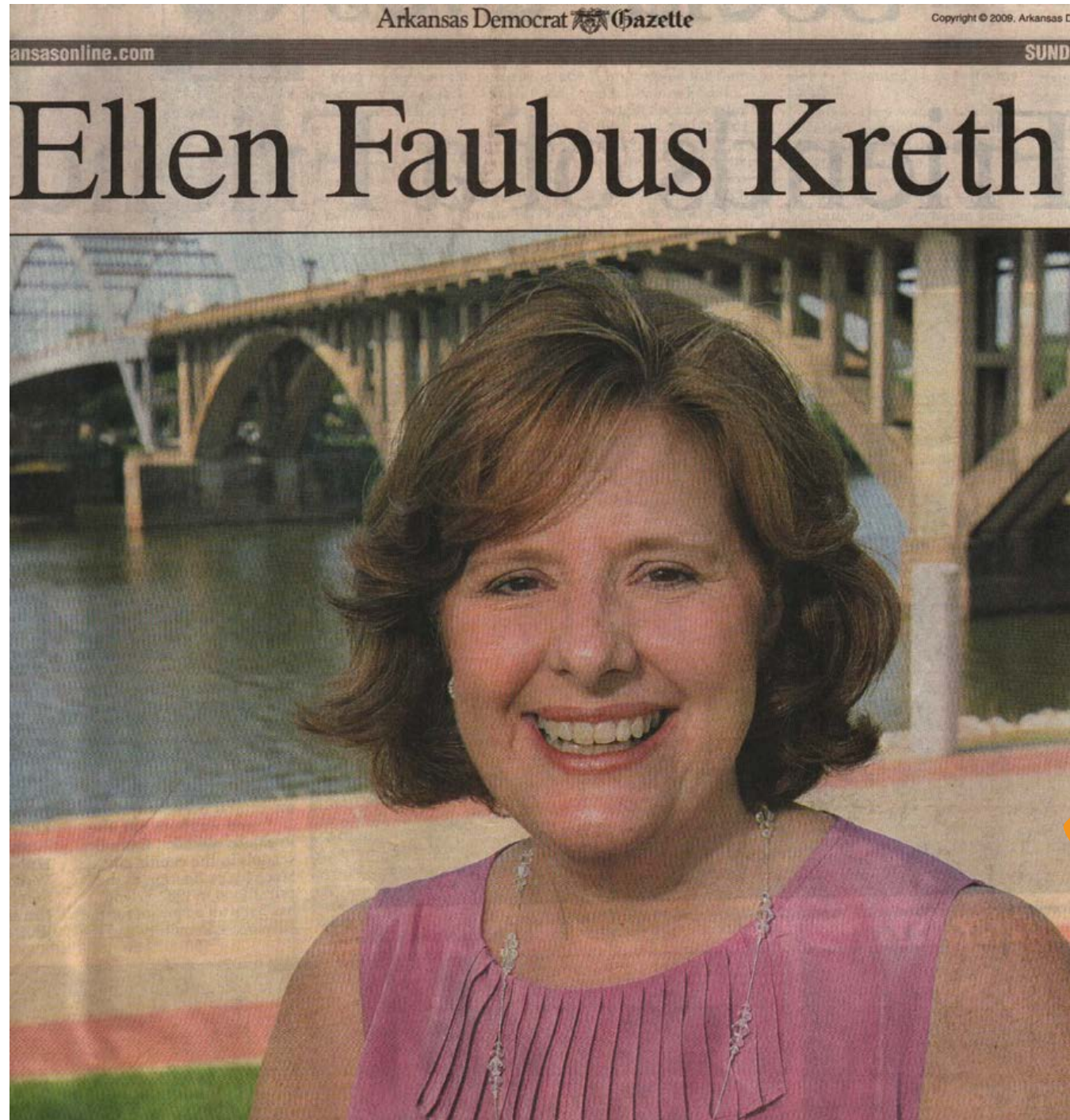
susan g. komen
race
FOR THE
cure

Presented by

NATIONAL SERIES SPONSORS



POWER WOMEN



• SUNDAY, AUGUST 30, 2009 •

Kreth

Continued from Page 1D

iving five years.

Kreth turned to Dr. Jack Sternberg, an oncologist who has retired. The next day — a Wednesday — Kreth went in for scans. The following day, she had a CT scan. On Friday, she had a port put in and started chemotherapy.

By that time, her tumor had grown to 10-by-10 centimeters (most the size of a grapefruit). A tumor that is 2/10ths of a centimeter is considered large. Since cancer was spreading so fast, it had to be treated aggressively. Kreth knew she was going to have a mastectomy, but the surgery would not be performed until cancer cells were contained. She underwent three months of chemotherapy to try and shrink the tumor. By the end of three months, the tumor had only shrunk to 7-by-8 centimeters.

Ellen was a remarkable patient," Sternberg recalls. "When she first came in, she got in my face and I got back in her face. She said, 'All right. You are the one who is going to treat me.'"

Sternberg, now a volunteer physician at the Hot Springs Paritable Christian Medical Clinic in Hot Springs, adds that the situation was "critical." But he says when a tumor grows that large, it sometimes reacts quickly to chemotherapy.

UNDERGOING THE KNIFE

Kreth underwent a bilateral (double) mastectomy on August 2, 2001, a Friday. Dr. James Sternberg, the surgeon, promised to

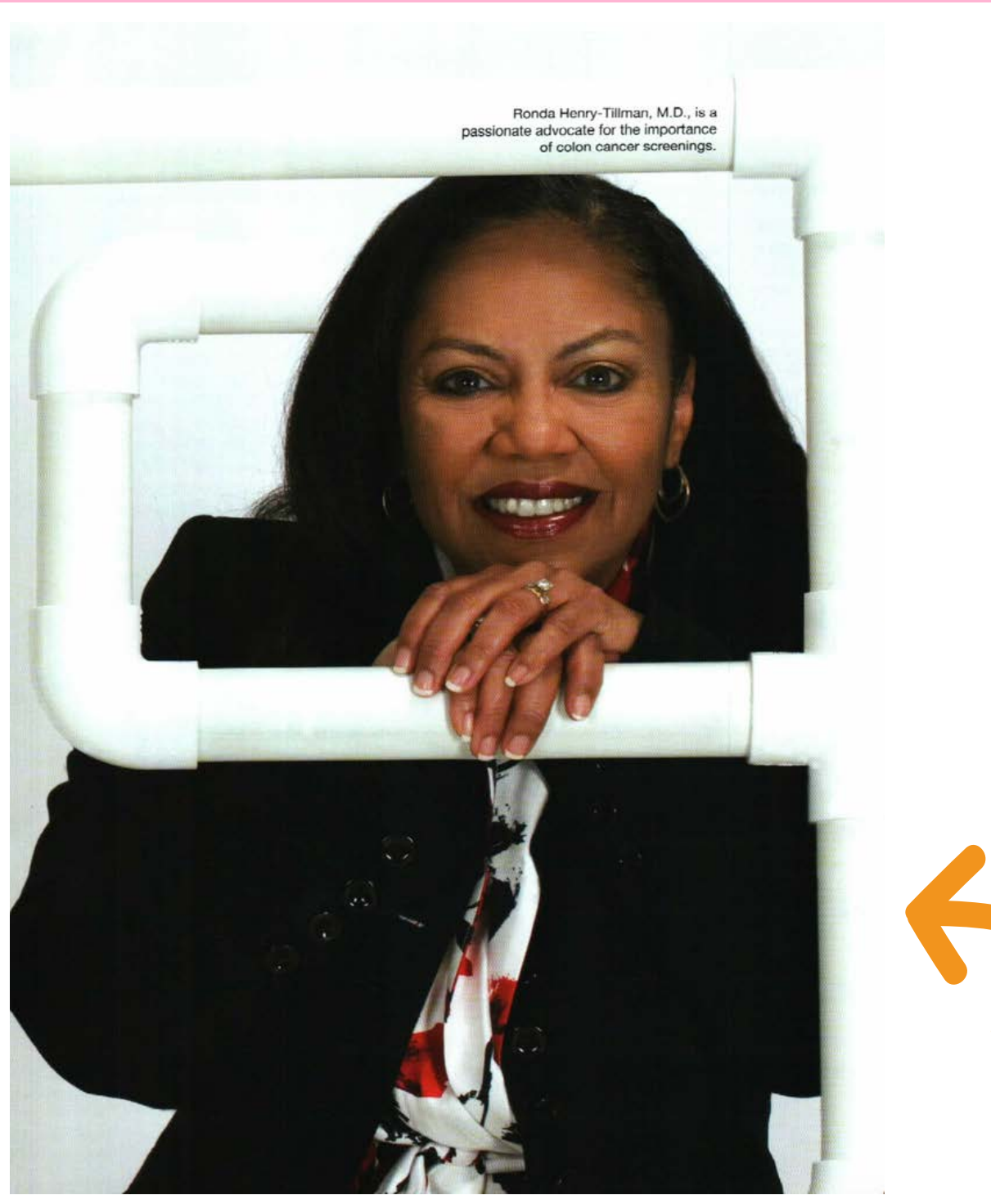


Arkansas Democrat-Gazette/ST

'Out of respect for the people who don't make it...

AFTER 8 YEARS OF BATTLING BREAST CANCER, ELLEN FAUBUS KRETH HAS BEEN DEDICATED TO HELPING BATTLE THE DISEASE.

POWER WOMEN



Ronda Henry-Tillman, M.D., is a passionate advocate for the importance of colon cancer screenings.



Tough Act to Follow

BY NATE HINKEL

AT AGE 48, Rev. Michael Williams was a prime target for cancer, and he wasn't even fully aware of it.

An African-American and edging closer to 50, Williams had seen his mother and father pass away from breast and lung cancers, respectively. His family history is rich with various types of the disease.

"In retrospect, I should have seen it coming," said Williams, pastor at the Family Time Baptist Church in Pine Bluff.

Subconsciously, perhaps he did.

Another pastor at the church one day urged Williams to go with him to a Pine Bluff clinic offering free colorectal cancer screenings. Sure enough, precancerous polyps were found in Williams and successfully removed.

"If I hadn't gone, I'd be having some serious problems today," Williams said. "I can't spread the word fast enough. Screenings save people a lot of trouble down the road, and everyone needs to have easy access to them."

The pilot screening program that discovered Williams' polyps was part of the Colorectal Cancer Control and Research Program established by the Arkansas Colorectal Cancer Act of 2005. The program was a collaborative effort involving UAMS' Winthrop P. Rockefeller Cancer Institute and

THE COLORECTAL
CANCER ACT OF 2005
SET ARKANSAS ON THE
RIGHT PATH TO MORE
EFFICIENT DIAGNOSIS
AND TREATMENT
OF THE POTENTIALLY
DEADLY DISEASE.

Fay W. Boozman College of Public Health, along with the Arkansas Department of Health. It was led by Ronda Henry-Tillman, M.D., and Paul Greene, Ph.D., both of UAMS.

Arkansas has one of the country's highest annual mortality rates from colorectal cancer with an average of just more than 20 deaths per 100,000. That's compared to the national average of 17 deaths per 100,000. Nearly 1,700 Arkansans are diagnosed with colon and rectum cancers each year.

Fortunately, patients whose tumors are detected at an early stage before the disease spreads have an 80 percent to 90 percent chance of surviving for 10 years or more. Colorectal cancer is one of the few diseases that can be prevented through regular screening,

“The most disheartening thing is when you have the knowledge and know-how to make a difference and you don't do anything about it.”

by allowing polyps to be removed before they become cancerous. Breaking down the barriers that placed Arkansas 47th in the nation in the number of cancer screenings was a primary focus of the Colorectal Cancer Act. The legislation mandated coverage for colorectal cancer screening by defined health care plans and created a pilot program to help uninsured and under-insured Arkansans obtain screening.

"That was a groundbreaking time in Arkansas and actually considered to be a very progressive piece of legislation nationally," said Henry-Tillman, principal investigator of the Colorectal Cancer Education and Screening Program at UAMS. "The most disheartening thing is when you have the knowledge and know-how to make a difference and you don't do

anything about it." Henry-Tillman also is medical director of the Women's Oncology Clinic at UAMS.

Changing Lives

The pilot screening program provided education and training for primary care physicians and no-cost screening for patients who met program guidelines and had no insurance.

From September 2006 to September 2008, 700 patients were referred to the program. Of those 700, 679 were eligible, 553 were screened and 507 received colonoscopies. Polyps were found in 176 patients, precancerous polyps were found in 96 and six cancers were diagnosed.

"What we found is that the state would indeed benefit from an effort to expand colorectal cancer screenings and education," said Glen Mays, Ph.D., chairman of the UAMS College of Public Health's Department of Health Policy and Management. "In this limited effort we reached a couple hundred patients with a life-saving and cost-effective intervention. Imagine the health and economic benefits of a comprehensive long-term screening program."

Williams said he eventually would have gotten screened had his colleague not urged him, but it probably would have been too late.

"This program and the efforts of the leaders at UAMS saved me from what probably would've ended up being a more troubling outcome," he said. "We need to keep these efforts going and keep changing the lives of those who take advantage of it."

And the Survey Says ...

The 2005 legislation provided resources for statewide research into the demographic and economic burden of colorectal cancer in Arkansas. It also showed that colorectal cancer in Arkansas services that are available to support a permanent statewide screening program.

Researchers found that although colorectal cancer screening rates in Arkansas were

THE STRONG, INTELLIGENT, AND BRAVE WOMEN BEHIND THIS COHORT ARE TRULY AWE-INSPIRING!

BATTLING AND BALLING

PinkZone 2010

Get In the **WBCA** **Wednesday**
February 10, 2010 - 7 pm

PinkZone

formerly known as the WBCA's "Think Pink"

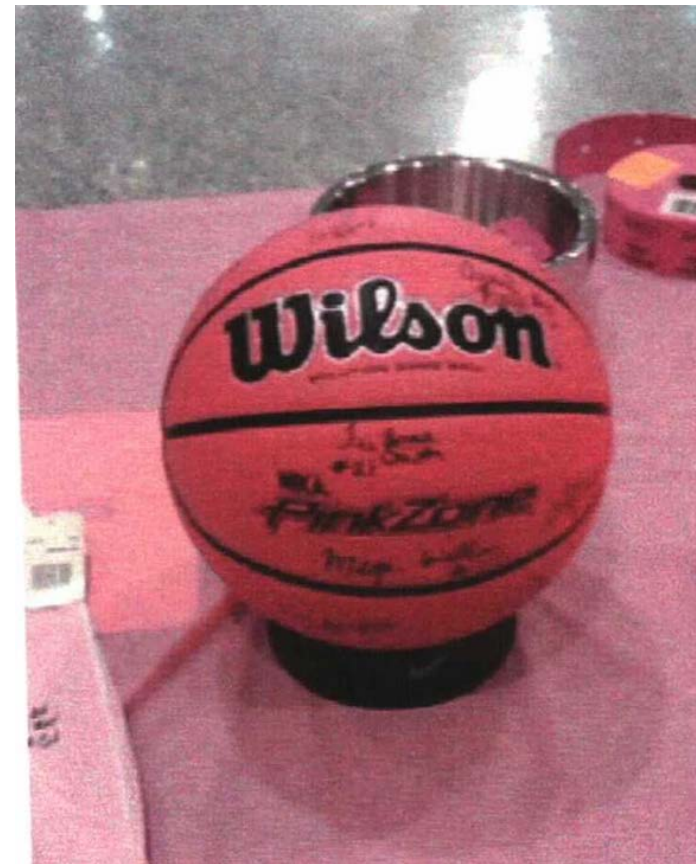

Join us in the fight against breast cancer

UALR Trojans **VS** **ULM Warhawks**

The Jack Stephens Center

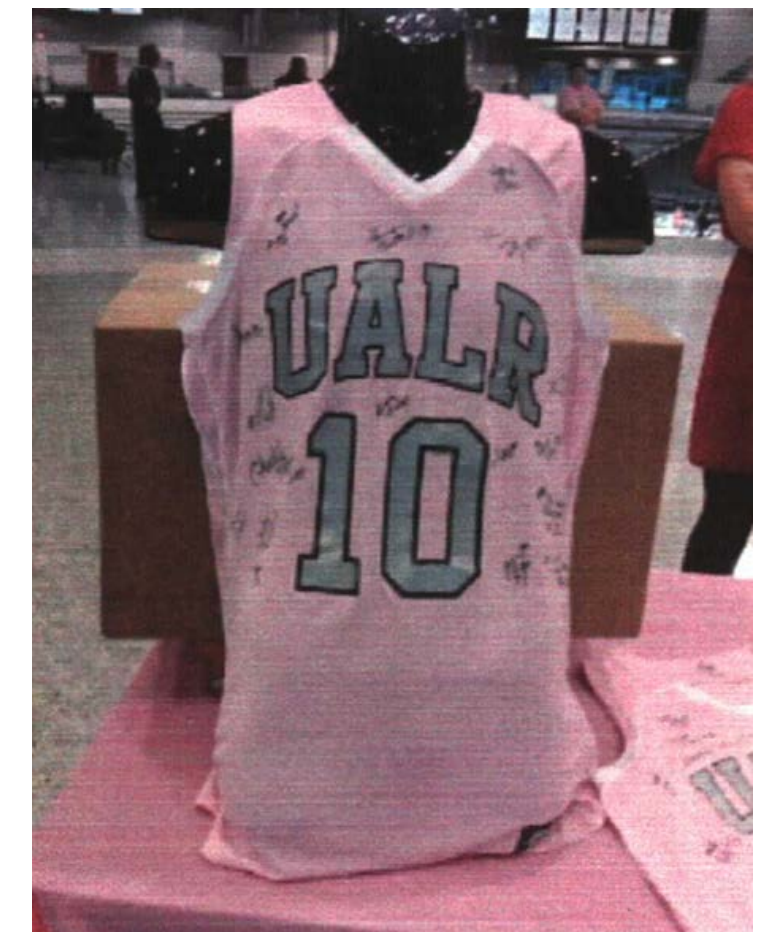
2010 Sponsors

- FRAZER FROST
- Jane and John Yocum
- Dennis & Karen Ferra
- Arrow Coach Lines
- Nancy McDonald
- Arkansas Times
- Triple S Alarm
- Lynn Luther



**UALR TROJANS VS. ULM
WARHAWKS, FEB. 10TH,
2010 @ 7PM**

**YET ANOTHER FUN EVENT
HELPING IN THE BATTLE
AGAINST BREAST CANCER!**



SPIT FOR THE CURE ON A ROLL!

More Events!

UAMS Winthrop P. Rockefeller Cancer Institute
 Arkansas Cancer Community Network
 6th Annual Mid-South Summit Black Expo
*Light, Camera, Action: Behind the Scenes of
 Cancer Control & Partners*
"Connecting to Fight Cancer Disparities in Arkansas"

Friday, February 26, 2010

6:30 pm **WELCOME**
 Karen Crowell, MD
 Arkansas Cancer Community Network

6:45 pm **CANCER INSTITUTE UPDATES**
 Peter Emanuel, MD, Executive Director
 Winthrop P. Rockefeller Cancer Institute

7:00 pm **INVOCATION**
 Rev. Ronnie Young
 Faithful Temple Baptist Church

Dinner Served

7:25 pm **KEYNOTE ADDRESSES**

Ronda Henry-Tillman, MD, Principal Investigator
 Arkansas Cancer Community Network

Ron Rasdon, BS
 Mississippi County Cancer Council

Representative Fred Allen
 State Legislator

Matty Willis, BS
 Witness Project

Darlene Johnson
 Cancer Survivor

Charlotte Williams, DrPH, MPH
 Clinton School of Public Service

Cornelyn Dorbin, MPA
 Arkansas Cancer Coalition

8:00pm **SPECIAL PRESENTATION**

8:05 pm **HONOREE AWARDS**
 Ronda Henry-Tillman, MD, Principal Investigator
 Arkansas Cancer Community Network

8:20 pm **CLOSING REMARKS**
 Thomas Kieber-Emmons, PhD
 UAMS

UAMS Winthrop P. Rockefeller Cancer Institute
 Arkansas Cancer Community Network
 5th Annual Mid-South Summit Black Expo
Celebration of Life
"Celebration de la Vie"

Friday, February 27, 2009

6:30 pm **Welcome**
 Karen Crowell, MD
 Arkansas Cancer Community Network

6:45 pm **Cancer Institute Updates**
 Peter Emanuel, MD, Executive Director
 Winthrop P. Rockefeller Cancer Institute

7:00 pm **Moving from Determinants to Solutions**
 Ronda Henry-Tillman, MD, Principal Investigator
 Arkansas Cancer Community Network
 Winthrop P. Rockefeller Cancer Institute

Dinner Served

7:25 pm **Introduction of Speaker**
 Ronda Henry-Tillman, MD, Principal Investigator
 Arkansas Cancer Community Network

7:30 pm **Keynote Speaker**
 Lovell A. Jones, PhD
 Director
 Center for Research on Minority Health
 M. D. Anderson Cancer Institute

8:00 pm **Honoree Awards**
 Chara Stewart, MPH, CHES
 Program Director
 Arkansas Cancer Community Network

8:20 pm **Closing Remarks**
 Representative Fred Allen
 Survivor Little Rock, Arkansas

*Dinner Catered by Two Sisters. Wine Donated by Pinnacle Family Medicine Clinic.
 Music Provided by Rodney Block & Band*

6th Annual

UAMS MidSouth Summit
BLACK EXPO
Making Cultural Connections

February 27 at the Metroplex
 10800 Colonel Glenn Road
 Little Rock, AR 72204

**FOOD, ENTERTAINMENT
 & PARKING**

For more information,
 call Timmons, 804-3212

Sponsored by:
UAMS
 WINTHROP P. ROCKEFELLER
 CANCER INSTITUTE

**2009-
 2010**



SPIT FOR THE CURE ON A ROLL!

More Events!



susan G. Komen FOR THE CURE OZARK 2010 Grant Recipients

AHEC-NW at Harrison	Harrison	870.391.3367
Cancer Support Home	Bentonville	479.521.8024
Community Clinic—Rogers	Rogers	479.636.9235
Community Clinic—Siloam Springs	Siloam Springs	479.524.9550
Community Clinic--Springdale	Springdale	479.751.7417
Donald W. Reynolds Cancer Support	Fort Smith	479.782.6302
Girl Scouts	Jonesboro	870.932.2833
Hope Cancer Resources	Springdale	479.361.5847
Madison County Health Coalition	Huntsville	479.738.2612
The Merlin Foundation	Berryville	870.553.2355
Mercy Breast Center	Rogers	479.986.6040
St Edward Mercy Foundation	Fort Smith	479.314.1118
Washington Regional Medical Center	Fayetteville	479.521.8024

2010 BREAST HEALTH PROVIDER'S conference

The Jones Center
922 East Emma Street
Springdale, AR

MARCH 12 2010

"The Impact of our Promise"

agenda

8:15-8:45	registration & refreshments	
8:45-9:00	welcome & announcements Alison Levin, LMSW	chapel
9:00-10:00	inflammatory breast cancer Steve Harms, M.D.	chapel
10:00-10:30	break & visit exhibits	
10:30-11:30	the research: projects & progress V. Suzanne Klimberg, M.D.	chapel
11:30-12:00	panel update — projects Jared Greer, Bessie Williams, & Kristina Bondurant, PhD	chapel
12:00-1:00	lunch (provided by Rick's Bakery) new surgical treatment options Michael Cross, M.D.	conference center
1:00-2:00	public policy & the effects on patients Bettie Miller, MSN RN	conference center
2:00-2:15	break	
2:15-3:15	breakout session #1	breakout topics:
3:15-4:15	breakout session #2	lifetime risk of lymphedema (rm 218) Linda Troitler, BSN CLT-LANA
4:30	evaluations & adjourn	palliative care: what, when, & why (Chapel) Steve Thomason, M.D.

presented by:

susan G. Komen FOR THE CURE OZARK

nutrition & breast cancer (rm 219/221)
Diane Johnson, R.D.

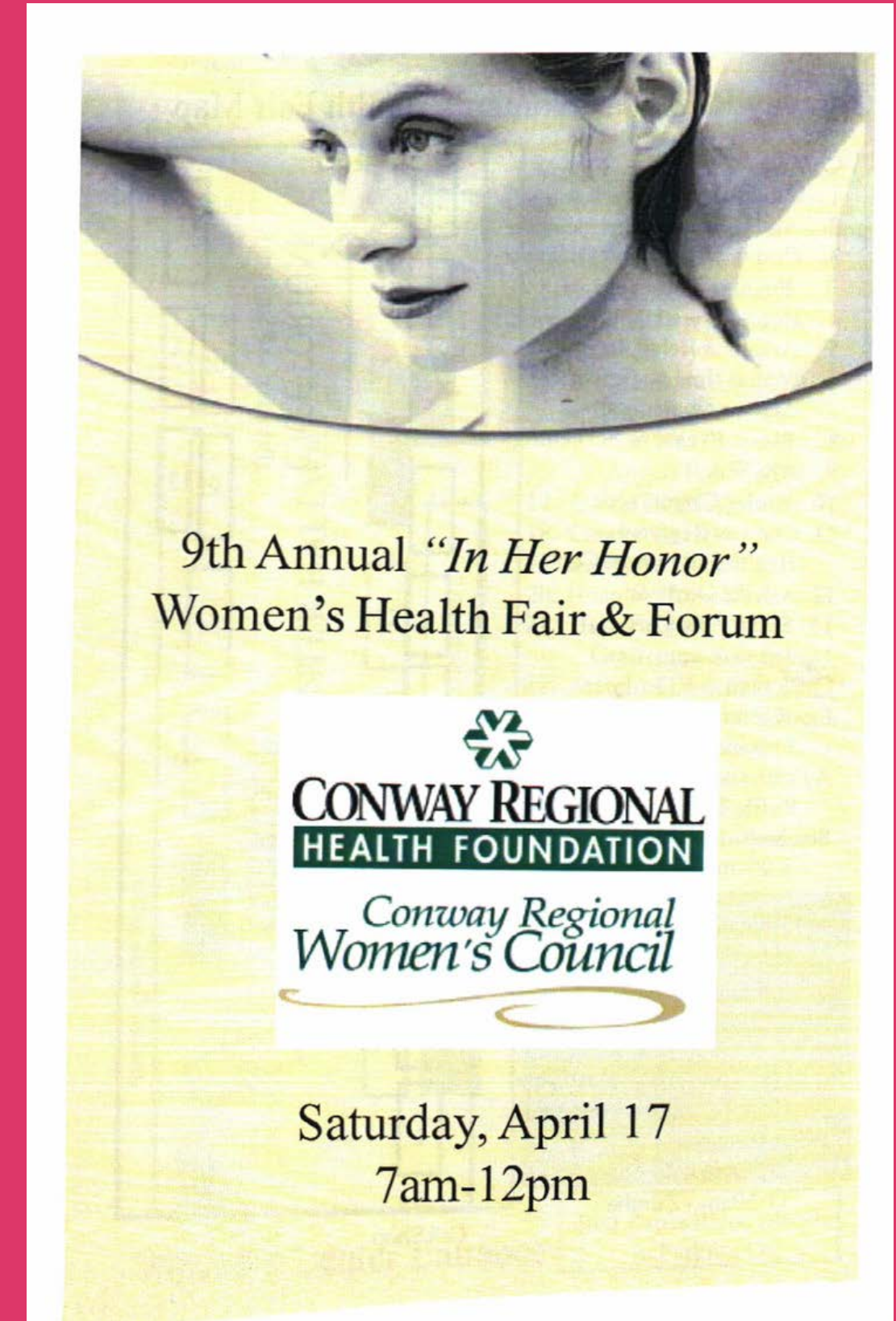
compassion fatigue (rm 228)
Jessica Minton, LMSW

for more information, visit www.komenozark.org

thank you sponsors!
Our sincere thanks to the many volunteers and sponsors who have contributed their time, in-kind support, and generous donations to make this event possible:

RICK'S BAKERY
CROSSROADS CAFE & CATERING

caring COMPRESSIONS
Arkansas Cancer Coalition



9th Annual "In Her Honor"
Women's Health Fair & Forum

CONWAY REGIONAL HEALTH FOUNDATION

Conway Regional Women's Council

Saturday, April 17
7am-12pm

Stay Informed, Stay Healthy
Arkansas's Roadmap for
Chronic Disease Prevention

State Forum
April 8, 2010
Pulaski Technical College

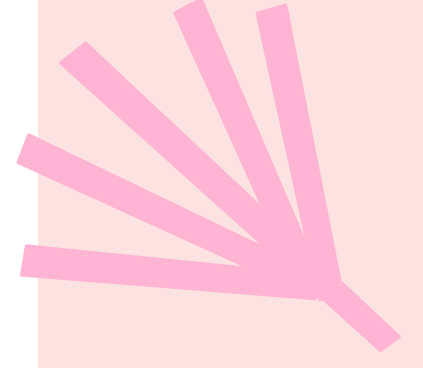
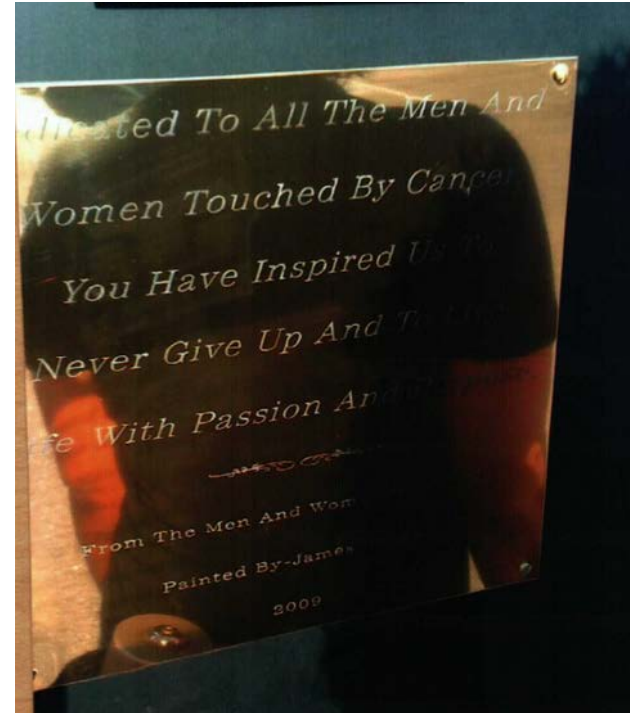
Shana Feters
Spit for the Cure

EXHIBITOR

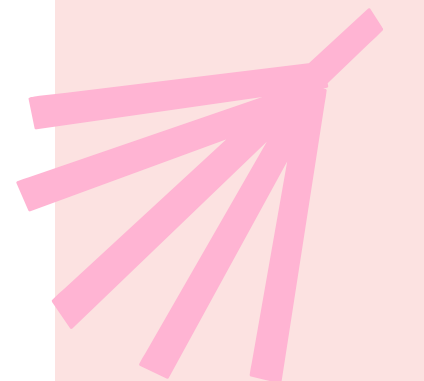
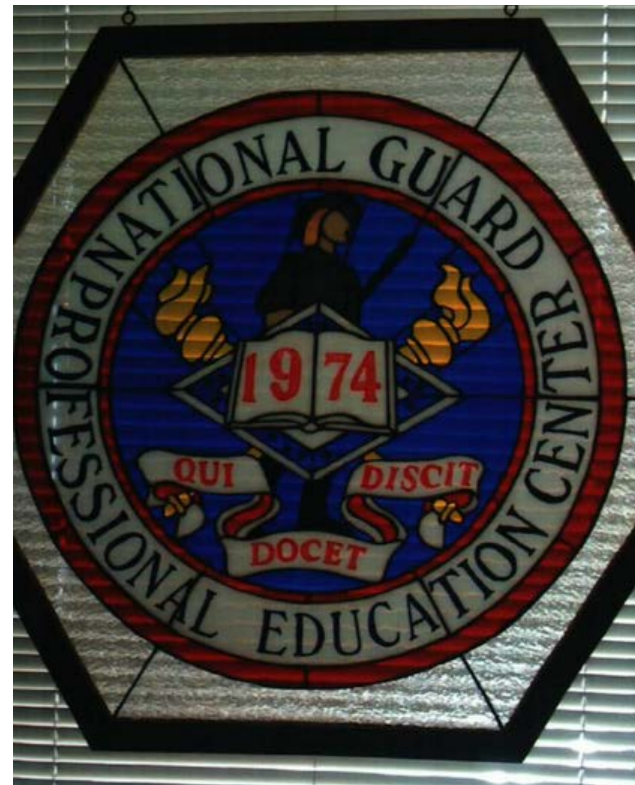
SPIT FOR THE CURE HAD SUCH A LARGE PRESENCE ANYWHERE IT WENT!

2010

PINKED OUT FOR BREAST CANCER RESEARCH!

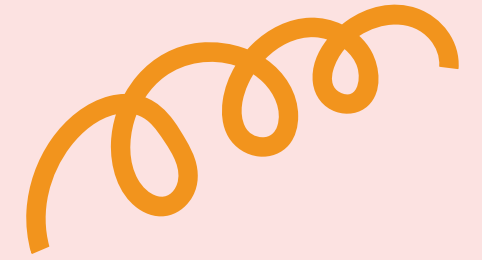
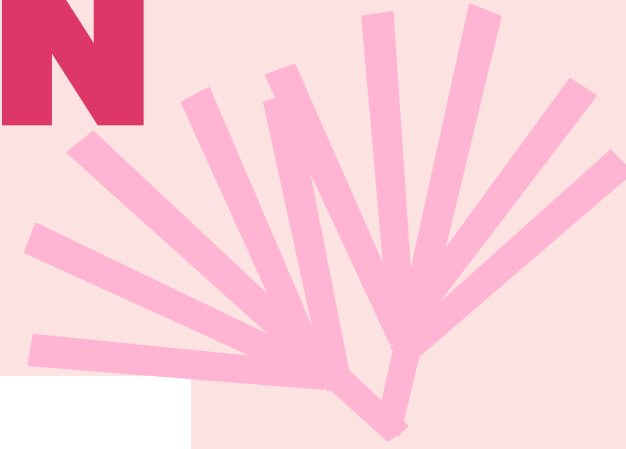


ANOTHER PINK-FILLED EVENT TO CONTRIBUTE TO THE FIGHT!



SPIT FOR THE CURE IN THE NEWS...

2011



WWW.JKELLYREFERRALS.COM

JK SPOTLIGHT
NEWSLETTER

FREE

PRINT EDITION
OCTOBER 2011
VOLUME 10

To Receive "JK SPOTLIGHT" Newsletter
Send Correspondence to:
joawilliams@jkellyreferrals.com
501-374-5000
1-877-374-5600 Toll Free
300 Spring St. • Suite 300
Little Rock, AR 72201
www.jkellyreferrals.com

FIGHT 2 THE FINISH!

from the Staff at JKelly Referrals
www.jkellyreferrals.com

HOPE RUNS ON HEROES.

Susan G. Komen Arkansas
RACE FOR THE CURE®
www.komenarkansas.org

RACE DATE: OCTOBER 22, 2011 ~ 8:00 A.M. ~ DOWNTOWN LITTLE ROCK, AR

JKELLY REFERRALS & INFORMATION SERVICES, INC.
JKELLY REFERRALS

- | | | | | |
|--|---|---|---|---|
| <p>Wesleyan University School
Geyer Springs Baptist Church
Holland Chapel Missionary Baptist
New Hope Sunday School Class—FUMC
Our Lady of Fatima Catholic Church
Parkview UMC Steel Magnolias
Roundtable Sunday School—FUMC
Spring Creek Missionary Baptist</p> <p>Organizations/Businesses:
Dixie Car Club
Saline Home Builders</p> | <p>Mr. & Mrs. Claud Bingham
Greg & Jacqui Blacklaw
Max & Jean Blake
Linda Blohm
Dr. Mike & Mary Lynn Bourns
Jan Brooks
Michelle Brown
Rita Brown
Pam Burton</p> | <p>Nancy Elrod
Wayne & Brenda Goines
Rev. and Mrs. Oscar Golden
Betty Berry Gwatney
Harold & Syble Gwatney
Lou Hamm
Nancy Hammond
Tim & Shelly Hampel
Mike & Sharon Harris
Peggy Hendrix
Margaret Herrick</p> | <p>Ingo Machis
David & Nancy Mattingly
Bernie & Mary Mazu
Dean & LaDonna McCormack
Dale & Peggy Mize
Jerry & Marilyn Moore
Mike & Sharon Niemczyk
Charlie & Gloria Phillips
Jerry & Kristi Ponder
Jim & Joyce Porter
Darrell & Pamela Ray</p> | <p>Edward & Becky Talbert
John & Pearl Toepfer
Bruce & Susan Thomas
Donald & Alexine Timm
Mark & Jayna Warner
John & Molly West
Laura West
Susan Williamson
Frances Wills
John & Kae Wissler
Donna Wright</p> |
|--|---|---|---|---|

Volunteers and Patients "Spit for the Cure"

CCC volunteer, Katy Baka receives instructions from UAMS project coordinator Shana Fetters to collect saliva and data for a breast cancer research program conducted by the Fay W. Boozman College of Public Health and Winthrop P. Rockefeller Cancer Institute at UAMS. Genetic profiles combined with environmental exposures are being studied to determine an individual's risk of developing breast cancer. Shana will return to the CCC at the McClellan 14 clinic and all women of the community are invited to participate in "Spit for the Cure". This "bank" of information will be an invaluable source of information for future research. If you are a women's group or Sunday School class that would like to participate, contact Shana Fetters at 501-296-1131.



Spit for the Cure

Staff photo by Christena Dowsett

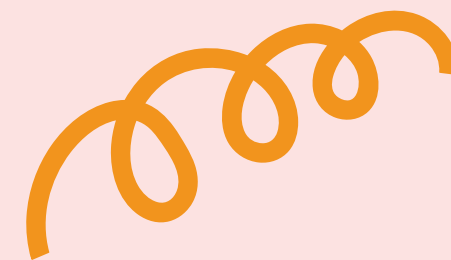
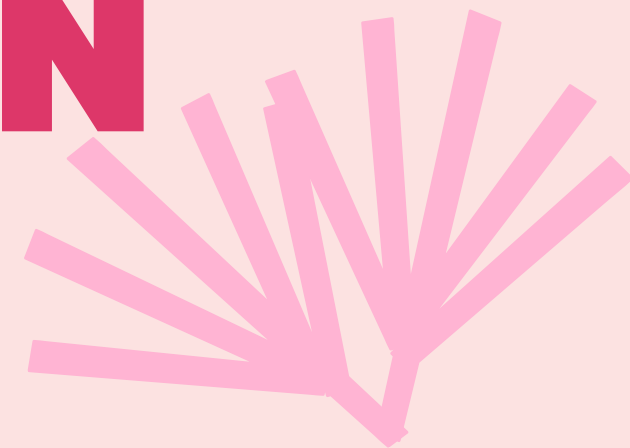
■ Daria Jacobs, community help recruiter with Spit for the Cure, helps Flo Johnson, right, fill out paperwork during the seventh annual Little River County Senior Citizen Celebration and Health Fair Thursday afternoon in Ashdown, Ark. Spit for the Cure takes DNA from saliva samples and tests for new markers in breast cancer research. More than 50 vendors and about 250 people attended the event.

SPIT FOR THE CURE WAS NO STRANGER TO THE SPOTLIGHT!



SPIT FOR THE CURE IN THE NEWS...

2011



Health & Fitness?

We've got a Doc for that!

Many people often ask, what is HMG? But a better question might be, who is HMG?

HMG physicians are people you know, names you've heard and include many physicians and practices with long records of service to Jonesboro and surrounding areas. As the region's largest physician group, our members represent a wide range of specialties and services—all conveniently located in clinics across Northeast Arkansas.

From obstetrics and family medicine to cardiology and neurosurgery, HMG doctors are committed to providing the highest quality healthcare while maintaining competitive rates and values. With more than 175 physicians, 35 specialties and 55 clinics, we are dedicated to providing healthcare for every stage of life's journey.

Last Year's Numbers

15,600+
in attendance

200
exhibitor booths

1,000+
health screenings

152
cyclists

15

ph

86

sp

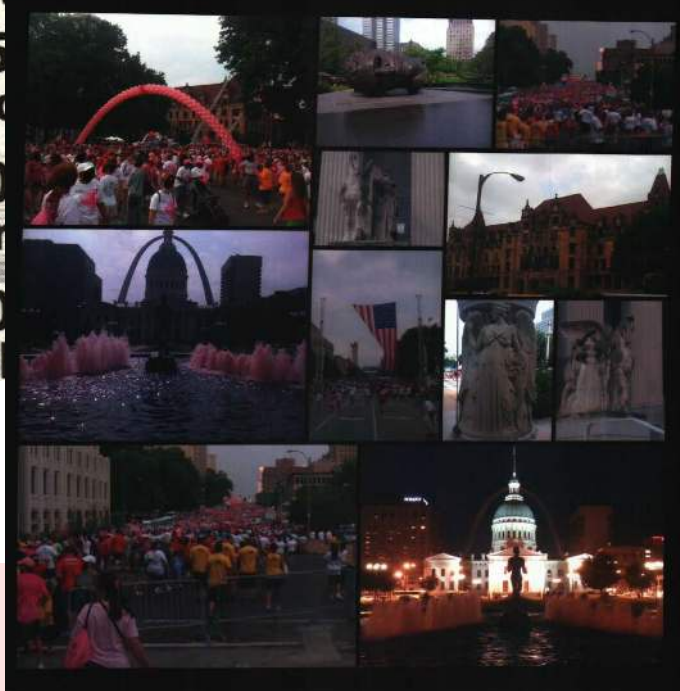
40

run

40

vo

ST. LOUIS 6/11/11



HIGHLIGHTS

- 200+ vendor booths
- 100 HMG doctors in attendance
- FREE health & fitness screenings
- Fun for the entire family
- Physician-led panel discussions

Health and fitness...
...and it's...
...this year!
...kick off at 7...
...with the first...
...K Run/Walk...
...ers and walk...
...ough the ASU...
...onesboro to...
...ced along the

Affiliate Susan G. Komen for the Cure.

The doors to the Convo will open at 8 a.m., and as always, admission for the entire family is free of charge. With more than 200 vendor booths set up on the floor and mezzanine levels, the Expo will feature information on a wide array of local health and fitness services. Plus, HMG physicians will be at various booths and participating in special panel discussions over the two-day period.

Several returning favorites to this year's Expo include the Healthy Cooking Kitchen and the Fitness Zone, where participants can watch demonstrations on cooking and exercise techniques. You can also take advantage of all the free health screenings, including cholesterol,

anemia, glucose, blood pressure and body mass index, just to name a few.

On Sunday, April 17, high school athletes from Brookland, Jonesboro, Nettleton, Ridgefield Christian, Valley View and Westside schools will be able to get their free sports physicals. The Expo is the only event of its kind in the entire country to provide extensive athletic physicals—including EKGs—free of charge to student athletes.

The new and improved Pink Zone, formerly the Women's Area, will feature health and fitness information just for the ladies. The St. Bernards Women's Mobile Unit will also be on site to conduct mammograms funded through a grant from the Arkansas Affiliate Susan G. Komen

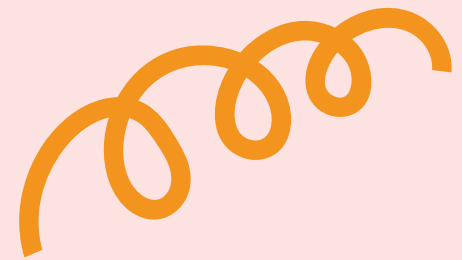
for the Cure. Uninsured women over age of 40, who have not been examined at least one year, should come see to qualify for a free mammogram.

Also bigger and better this year is the Kids Zone—where kids of all ages can climb on the Army National Guard climbing wall, knock down some pins with the Jonesboro Bowling Center, and take part in the NFL Play 60.

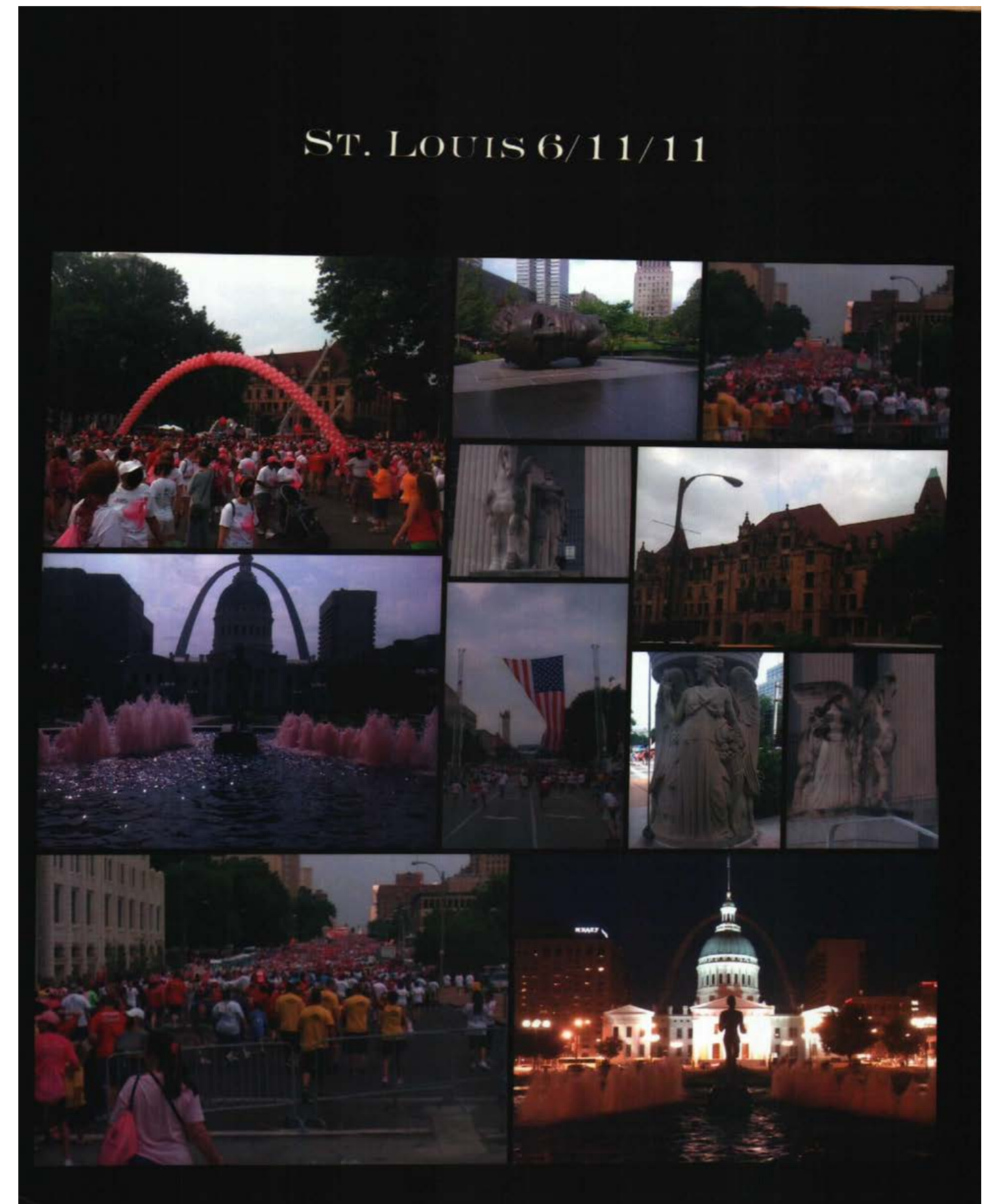
There's something for everyone, so mark your calendar and join us on April 16 and 17 for the best ever Health & Fitness Expo!

Find out more at
HMGexpo.com

JETSET, *Spit*, REPEAT



EVENTS THAT HELPED SHAPE THE COHORT DIDN'T JUST TAKE PLACE IN THE STATE CAPITOL OF LITTLE ROCK-- STUTTGART, SPRINGDALE, FAYETTEVILLE, AND EVEN ST. LOUIS MADE IT ONTO THE LIST!



GRATITUDE

Gratitude

Thank you for your support throughout the year.
We look forward to future partnership and collaboration
in 2011.

Your support has allowed us to offer information
and services to hidden populations across the
state. Thanks for joining us!

Wishing you peace, love, and joy This Holiday season.



May the spirit of the season
carry you into the new year.

Happy Holidays,
Patricia

On behalf of the Emmanuel Baptist Church Family,
I would like to take a moment to Thank You
for your time, dedication, enthusiasm in making our
1st Annual Health Fair/Clothing Drive a success. We could not
have done it without you.

Yours in Christ,
Sis Felicia Hunter - Health Ministry Coord.
Sis Betty Mitchell - Missionary Chk.

With heartfelt appreciation
for the thoughtfulness
you've shown.

Shana,
It was such a treat to
have here for the health fair
I do hope you were able to
get a sufficient number of
specimens to help.

Thank you for your time and
please extend our thanks to
your co-workers.

Betty Gregory R.N.

Dear Shana,

It was so nice to
see you. We appreciate
you attending our Breast-
Friends Meeting.

Your presentation on
Spit for the Cure was
very informative.

Thanks for getting
our BreastFriends members
registered to be part of
the research project.

Happy Thanksgiving
Judson Veumard
BreastFriends

**GRATITUDE HAS
ALWAYS BEEN A BIG
PRINCIPLE IN THE
DEVELOPMENT OF THE
COHORT!**

GRATITUDE

Gratitude

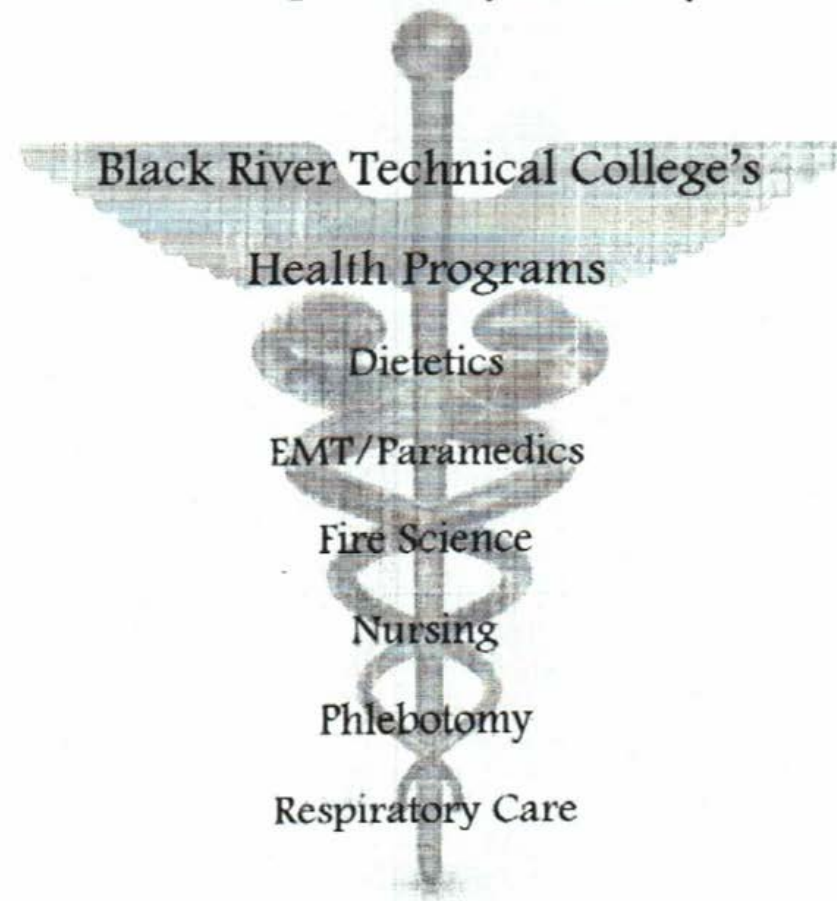


Thanks for coming last week! Let me know how we might help in the future. Have a great week!
Rebecca Jones

WE ARE SO THANKFUL FOR THE GREAT INDIVIDUALS THAT STAND BY OUR SIDE.

Thank you for making our 2010 Health Fair a success!

We hope to see you next year!



Dear Spit for the Cure,

The Searcy County Health Unit, Department of Human Services, Prevention Coalition, and 5-Star Committee would like to express our thanks for your support at our first annual Health & Safety Fair. The event was a huge success.

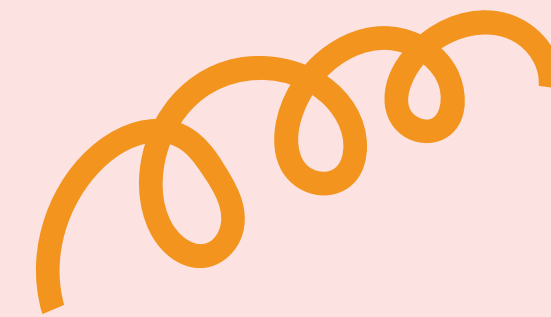
Over 30 county, state, and federal vendors participated by offering free health screenings, information, and safety education to over 200 Searcy County citizens!

Your support and participation made this possible. We look forward to working with you next year.

Sincerely,
Melissa Smyth, DHS



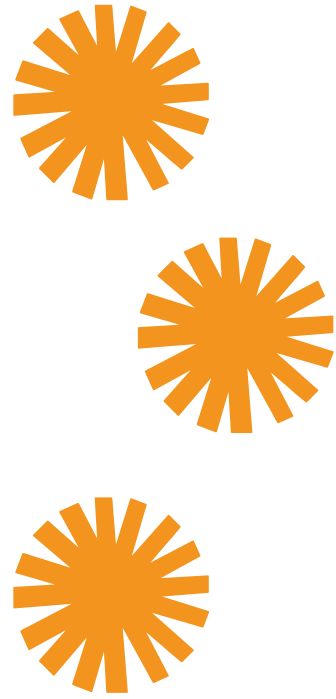
**AND AS THE YEARS
PASSED, *new* PLACES,
FACES, AND EVENTS
BEGAN TO FURTHER
ACCUMULATE TO SPIT
FOR THE CURE'S
JOURNEY.**



**THEN, A CHANGE
HAPPENED...**



**FIRST IT WAS SPIT FOR
THE CURE, *Then* THEN IT
BECAME ARKANSAS
RURAL COMMUNITY
HEALTH IN 2019...**





HERE'S TO *ALL* OF THE
PEOPLE THAT HAVE
SHAPED THE ARKANSAS
RURAL COMMUNITY
HEALTH COHORT!

